

**EOMES Antibody(N-term)**  
**Affinity Purified Rabbit Polyclonal Antibody (Pab)**  
**Catalog # AP19703a****Specification**

---

**EOMES Antibody(N-term) - Product Information**

Application	WB,E
Primary Accession	<a href="#">O95936</a>
Other Accession	<a href="#">NP_005433.2</a>
Reactivity	Human
Host	Rabbit
Clonality	Polyclonal
Isotype	Rabbit IgG
Calculated MW	72732
Antigen Region	28-57

**EOMES Antibody(N-term) - Additional Information****Gene ID** 8320**Other Names**

Eomesodermin homolog, T-box brain protein 2, T-brain-2, TBR-2, EOMES, TBR2

**Target/Specificity**

This EOMES antibody is generated from rabbits immunized with a KLH conjugated synthetic peptide between 28-57 amino acids from the N-terminal region of human EOMES.

**Dilution**

WB~~1:1000

E~~Use at an assay dependent concentration.

**Format**

Purified polyclonal antibody supplied in PBS with 0.09% (W/V) sodium azide. This antibody is purified through a protein A column, followed by peptide affinity purification.

**Storage**

Maintain refrigerated at 2-8°C for up to 2 weeks. For long term storage store at -20°C in small aliquots to prevent freeze-thaw cycles.

**Precautions**

EOMES Antibody(N-term) is for research use only and not for use in diagnostic or therapeutic procedures.

**EOMES Antibody(N-term) - Protein Information****Name** EOMES**Synonyms** TBR2

**Function** Functions as a transcriptional activator playing a crucial role during development. Functions in trophoblast differentiation and later in gastrulation, regulating both mesoderm delamination and endoderm specification. Plays a role in brain development being required for the specification and the proliferation of the intermediate progenitor cells and their progeny in the cerebral cortex (PubMed:[17353897](#)). Required for differentiation and migration of unipolar dendritic brush cells (PubMed:[33488348](#)). Also involved in the differentiation of CD8+ T-cells during immune response regulating the expression of lytic effector genes (PubMed:[17566017](#)).

**Cellular Location**

Nucleus.

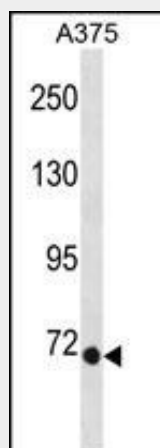
**Tissue Location**

Expressed in CD8+ T-cells.

**EOMES Antibody(N-term) - Protocols**

Provided below are standard protocols that you may find useful for product applications.

- [Western Blot](#)
- [Blocking Peptides](#)
- [Dot Blot](#)
- [Immunohistochemistry](#)
- [Immunofluorescence](#)
- [Immunoprecipitation](#)
- [Flow Cytometry](#)
- [Cell Culture](#)

**EOMES Antibody(N-term) - Images**

EOMES Antibody (N-term) (Cat. #AP19703a) western blot analysis in A375 cell line lysates (35ug/lane). This demonstrates the EOMES antibody detected the EOMES protein (arrow).

**EOMES Antibody(N-term) - Background**

This gene encodes a member of a conserved protein family that shares a common DNA-binding domain, the T-box. T-box genes encode transcription factors involved in the regulation of developmental processes. A similar gene disrupted in mice is shown to be essential during trophoblast development and gastrulation.

**EOMES Antibody(N-term) - References**

Wang, H.T., et al. Xi Bao Yu Fen Zi Mian Yi Xue Za Zhi 26(1):31-34(2010)  
Narayanan, S., et al. PLoS ONE 5 (5), E10636 (2010) :  
D'Cruz, L.M., et al. Semin. Immunol. 21(2):92-98(2009)  
Sessa, A., et al. Neuron 60(1):56-69(2008)  
Araki, Y., et al. J. Immunol. 180(12):8102-8108(2008)